



CCA22-35

Air Carton Sealer



OPERATING & MAINTENANCE MANUAL

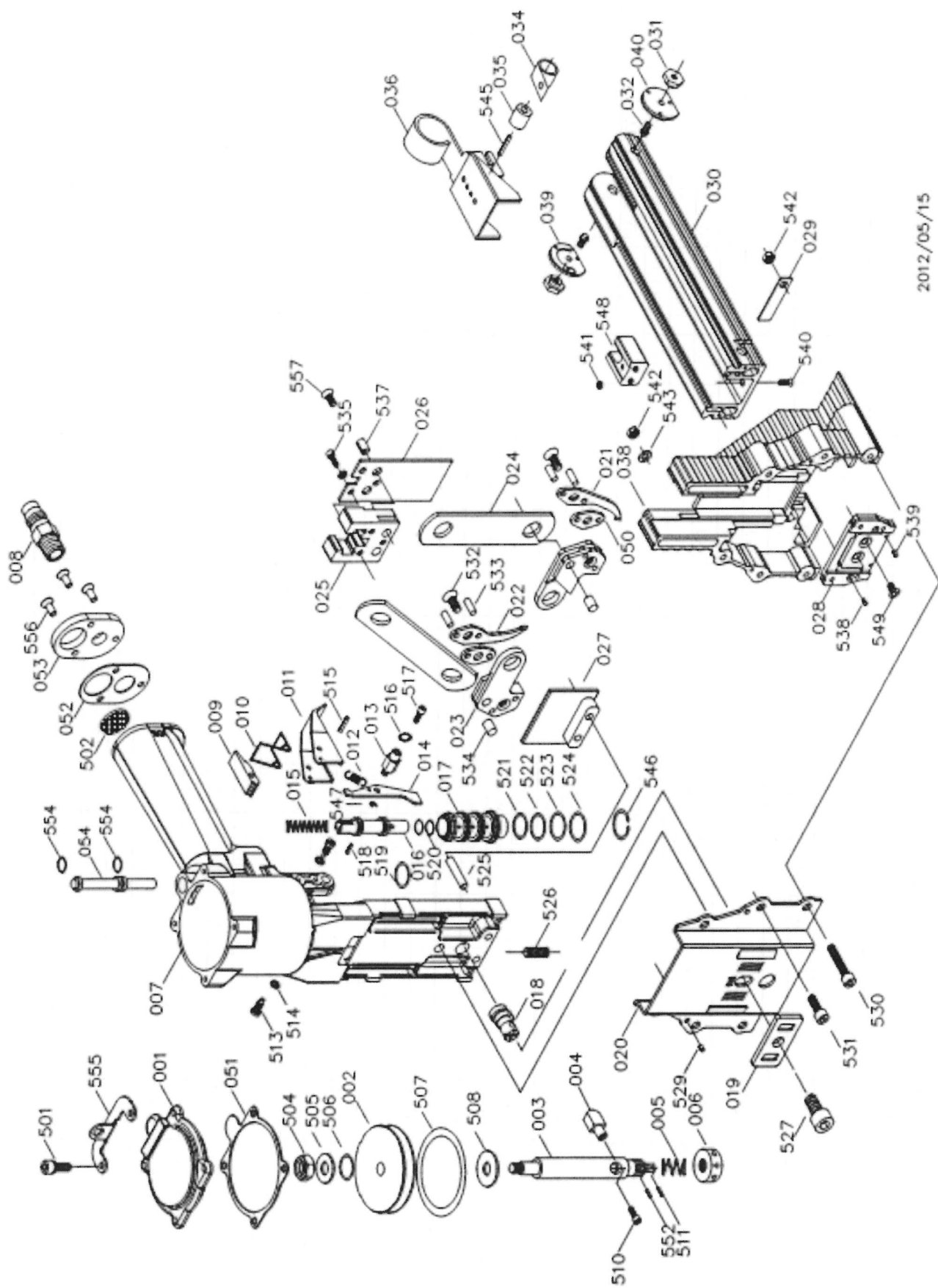


WARNING

BEFORE USING THIS TOOL, STUDY THIS MANUAL TO ENSURE SAFETY WARNING AND INSTRUCTIONS.

KEEP THESE INSTRUCTIONS WITH THE TOOL FOR FUTURE REFERENCE.

SEPTEMBER 2021



2012/05/15

CCA2235 AIR CARTON STAPLER PARTS LIST

Item	Part No.	Part No.	Description	Qty	Specification	Item	Part No.	Part No.	Description	Qty	Specification
001	A01200113	XM10575	CAP	1		504	BAD02061	XM10652	HEX.NUT	1	M6 x 1
002	A02800201	XM10576	PISTON	1		505	BAT03061	XM10653	WASHER	1	1/4" x 5/8" x 1T
003	A02800301	XM10577	PISTON ROD	1		506	BAB017076	XM10059	O-RING	1	Ø1.78 x Ø7.65
004	A00100401	XM10149	BLOCK	1		507	BAB057476	XM10655	O-RING	1	Ø5.7 x Ø47.6
005	A00100501	XM10150	SPRING	1		508	A00104101	XM10656	WASHER	1	Ø8 x Ø23 x 1.6T
006	A00100601	XM10580	COLLAR	1		510	BAC0404062	XM10657	HEX.SOC.HD.BOLT	1	M4 x 0.7-6
007	XM10581	XM10581	BODY	1		511	BAA025014	XM10658	SPRING PIN	1	Ø2.5-14
008	94220		AIR PLUG	1		513	A00104401	XM10660	TRIGGER SCREW	2	M4 x 0.7-7
009	A00100902	XM10153	BLOCK	1		514	BAE01042	XM10661	SPRING WASHER	2	M4
010	A00101001	XM10154	SPRING	1		515	BAA030020	XM10199	SPRING PIN	1	Ø3-20
011	A00101101	XM10155	TRIGGER	1		516	BAE02042	XM10200	OUTSIDE TEETH WASHER	1	M4
012	A00101201	XM10156	SPRING	1		517	BAC0404102	XM10201	HEX.SOC.HD.BOLT	1	M4 x 0.7-10
013	A00101301	XM10157	ROD	1		518	BAA030010	XM10202	SPRING PIN	1	Ø3-10
014	A00101402	XM10158	TRIGGER'S CONTROL	1		519	BAB017124	XM10203	O-RING	1	Ø1.78 x Ø12.42
015	A00101501	XM10159	SPRING	1		520	BAB017076	XM10059	O-RING	2	Ø1.78 x Ø7.65
016	A00101601	XM10495	VALVE	1		521	BAB016145	XM10515	O-RING	1	Ø1.6 x Ø14.5
017	A00101702	XM10161	TUBE	1		522	BAB016150	XM10516	O-RING	1	Ø1.6 x Ø15
018	A00101801	XM10162	ADJUSTING ROD	1		523	BAB016155	XM10517	O-RING	1	Ø1.6 x Ø15.5
019	A00101901	XM10163	ADJUSTING PLATE	1		524	BAB016160	XM10518	O-RING	1	Ø1.6 x Ø16
020	A00102001	XM10164	FRONT PLATE	1		525	A00104701	XM10208	ROD	2	Ø4.85-17.5
021	A01200501	XM10599	RIGHT TEETH	1	22mm	526	BAC0306142	XM10209	HEX.SOC .HDLESS.	1	M6 x 1-14
022	A01200601	XM10600	LEFT TEETH	1	22mm	527	BAC0408162	XM10210	HEX.SOC.HD.BOLT	1	M8 x 1.25-16
023	A00102301	XM10167	TEETH SEAT	2		529	BAA030010	XM10381	SPRING PIN	4	Ø3-10
024	A00102401	XM10168	PLATE	2		530	BAC0405502	XM10716	HEX.SOC.HD.BOLT	2	M5 x 0.8-50
025	A00102502	XM10169	BLOCK	1		531	BAC0405302	XM10717	HEX.SOC.H D.BOLT	4	M5 x 0.8-30
026	A01201707	XM10700	DRIVER	1	22-35 (71.8mm)	532	BAC0205122	XM10213	HEX.SOC.FLAT COUNTER	2	M5 x 0.8-12
027	A00102703 @	XM10171	COVER UNIT	1		533	A00104501	XM10214	PIN	4	Ø3.96-13.6
028	A01201103P	XM10704	DRIVER GUIDE UNIT	1	22-35 (2.3mm)	534	A00104602	XM10215	PIN	2	Ø6.05-8
029	A00102901	XM10173	PLATE	2		535	BAC0604102	XM10657	HEX.SOC.HD.BOLT	2	M4 x 0.7-10
030	A00103003	XM10174	MAGAZINE	1	19-35 22-35	537	BAA060016	XM10683	SPRING PIN	2	Ø6-16
031	A00103102	XM10175	ROD NUT	2		538	BAC0102101	XM10718	FLAT HD.SCREW	2	M2.6 x 0.45-10
032	A00103203	XM10176	ROD	2		539	BAA020006	XM10719	SPRING PIN	2	Ø2-6
034	A00103401	XM10177	SPRING	1		540	BAC0204202	XM10120	HEX.SOC.FLAT COUNTER	1	M4 x 0.7-22
035	A00103501	XM10178	ROOLER	1		541	BAD01041	XM10119	LOCK NUT	1	M4 x 0.7
036	A00103707@	XM10179	PUSHER UNIT	1	19-35 22-35	542	BAD01051	XM10221	LOCK NUT	6	M5 x 0.8
038	A00103804	XM10180	MAGAZINE SEAT	1	19-35 19-34 9040 7437	543	BAE03051	XNM10222	WASHER	4	Ø5.1 x Ø12 x 0.8T
039	A00103903 @	XM10087	RIGHT PUSHER GUIDE	1		545	BAA040016	XM10223	SPRING PIN	1	Ø4-16
040	A00103904@	XM10089	LEFT PUSHER GUIDE	1		546	BAF22002	XM10224	C-RING	1	Ø20
050	A00105001	XM10183	WASHER	2		547	BAF10252	XM10225	E-RING	1	Ø2.5
051	A01202201	XM10646	WASHER GASKET	1		548	A00105601	XM10226	BRACKET	1	
052	A00106001	XM10647	WASHER	1		549	BAC02040802	XM10227	HEX.SOC.FLAT COUNTER SUNK HD SCREW	2	M4 x 0.7-8
053	A00105801	XM10648	COVER UNIT	1		552	A00104901	XM10228	PLASTIC PIN	1	
054	XM10649	XM10649	SHAFT	1		555	C00121201	XM10722	COUNTER BALANCER HANGER	1	
501	BAC0604142	XM10650	HEX.SOC.HD .BOLT	4	M4 x 0.7-14	556	BAC0204102	XM10231	HEX.SOC.FLAT COUNTER SUNK HD SCREW	1	M4 x 0.7-10
502	BAI1401	XM10189	SILENCER	1		557	BAC0204062	XM10232	HEX.SOC.FLAT COUNTER SUNK HD SCREW	1	M4 x 0.7-6